

OFFICIAL PROGRAMME 6p.

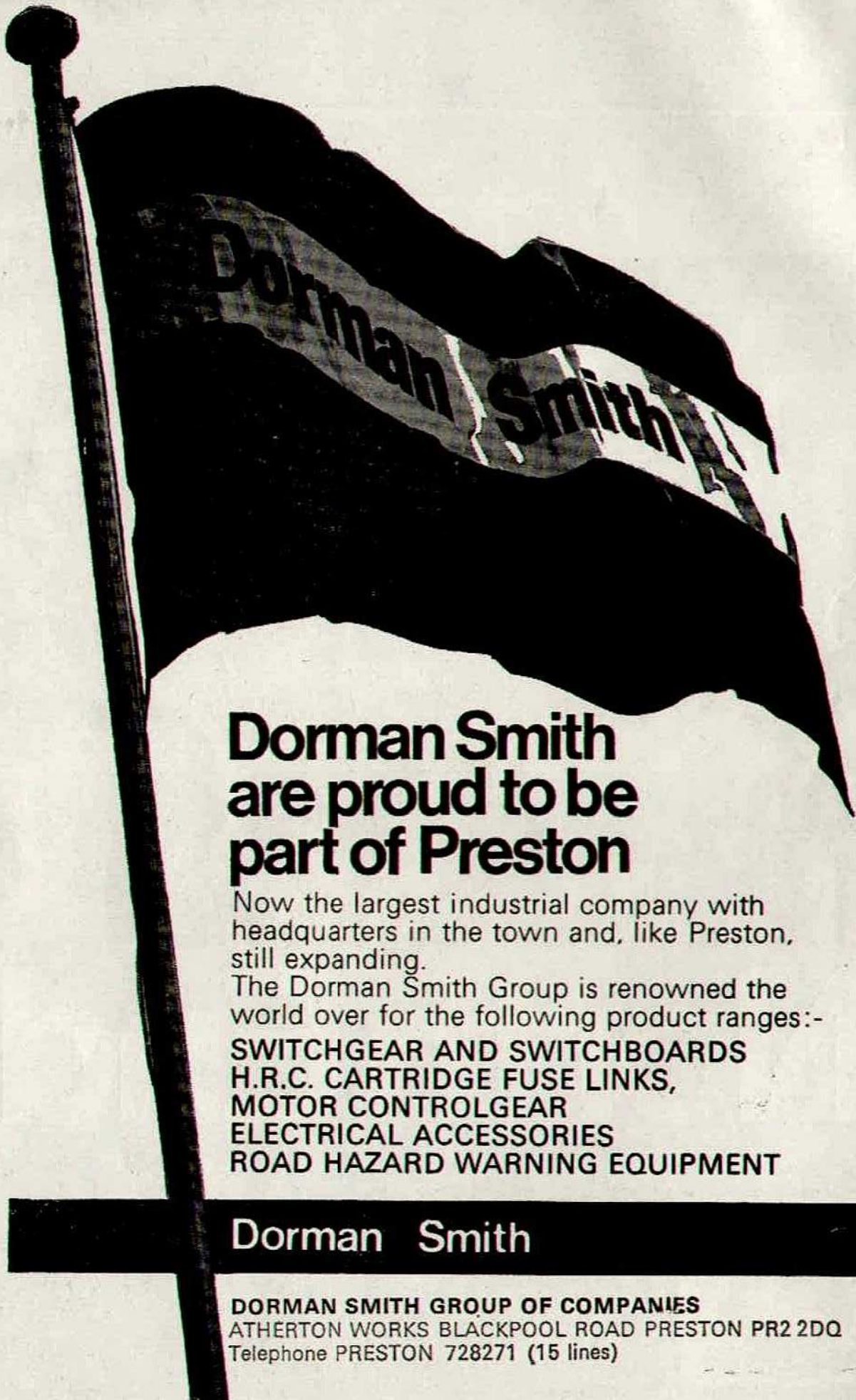


Preston North End



Football League Division II
SWINDON TOWN

Saturday, 10th March, 1973



Dorman Smith are proud to be part of Preston

Now the largest industrial company with headquarters in the town and, like Preston, still expanding.

The Dorman Smith Group is renowned the world over for the following product ranges:-

**SWITCHGEAR AND SWITCHBOARDS
H.R.C. CARTRIDGE FUSE LINKS,
MOTOR CONTROLGEAR
ELECTRICAL ACCESSORIES
ROAD HAZARD WARNING EQUIPMENT**

Dorman Smith

**DORMAN SMITH GROUP OF COMPANIES
ATHERTON WORKS BLACKPOOL ROAD PRESTON PR2 2DQ
Telephone PRESTON 728271 (15 lines)**

CLUB NOTES

WE HAVE had so little competitive football at Deepdale this year that it is hard to credit that only two League matches and one F.A. Cup-tie have been played there in nine weeks.

The results did not give anyone at Deepdale or our genuine supporters the slightest satisfaction, since all three were lost, and North End did not score one goal in reply to nine.

All they did, along with all but one other result in this grim New Year, was to provide a load of extra ammunition for snipers and critics of which there is never any lack when a club needs help and players encouragement rather than hindrance. There is nothing new in this. It is typical of adversity and must be accepted.

Accepting bad results with resignation is altogether different. The mood must be to try all the harder to improve upon them, for the simple reason that the club must go on and strive to win back lost support by doing better. That is how the situation is at Deepdale and it cannot be overcome by recriminations.

There is no point now in reiterating results and making comparisons. Everyone knows them. A new page had to be started after 0-5 at home just a month ago. The first entry, as you know, was the Board's decision to part company with the manager, Alan Ball, to end a phase which began in June, 1970.

* * *

It started successfully with promotion back to the Second Division at the first attempt, an achievement for which he was given due credit and reward. Since then a season promising enough until Christmas ended disappointingly, and was followed by one which raised similar hopes only to fade into a worse anti-climax.

The salient facts which could neither be ignored nor glossed over were the vanished chance of promotion, exit from the F.A. Cup through a home defeat by a Third Division side, only one win in three months goals conceded wholesale by a defence which had the best record in the Division a big drop in attendances and team spirit at a low ebb.

Mr. Ball's responsibility was handed over to his recently appointed assistant Mr. Frank Lord who has plenty of football experience and has tackled his task as caretaker-manager with an enthusiasm that merits the backing of the playing staff and all who have the interests of North End at heart.

A change for the better was the immediate sequel. Visiting promotion-seeking Aston Villa was a daunting prospect but a point was earned on a ground where North End have seldom gained anything.

It stopped the rot. In the succeeding match against a much improved Sheffield Wednesday at Hillborough our players were optimistic about getting at least a draw after scoring first but Wednesday's pressure and determination finally pulled them through by 2-1.

Now we are at home to Swindon Town and the situation of both clubs in the table clearly makes it a "four point" match. A North End win would improve their record to the extent of 32 matches 30 points.

Front cover picture—Alec Bruce gets in a shot in the game against Portsmouth.

PRESTON NORTH END

FOOTBALL CLUB LIMITED
DEEPDALE, PRESTON

Telephone: Preston 53818/53819

President: N. BUCK

Vice Presidents: H. CARTMELL
W. MERCER
Dr. A. R. WOOD

Chairman: T. C. NICHOLSON,
J.P., F.I.O.B.

Vice Chairman: R. B. BOLTON

Directors:

T. F. CHARNLEY
T. H. GORE
E. GRIFFITH, B.V.Sc., M.R.C.V.S.
A. HARRISON, B.E.M.
A. R. W. JONES, J.P., F.R.I.C.S.
A. C. PILKINGTON, A.I.C.S.
J. WILDE, M.B.E.

Manager:

FRANK LORD

Secretary:
J. W. BOLTON

Commercial Manager:
F. BADHAM

Financial Secretary:
C. H. MAYMON, F.C.A.

Hon. Medical Officer:
Dr. C. M. MACKENZIE

HONOURS

League: First Division
Champions 1889—1890
Runners-up: 6 times.

League: Second Division
Champions
1904 1913 1951
Runners-up: Twice.

League: Third Division
Champions 1971

F.A. Cup Winners
1889 1938

F.A. Cup Finalists
1888 1922 1937 1954 1964

War Cup Winners
1941

F.A. Charity Shield Finalists
1938

F.A. Youth Cup Finalists
1960

Programme Editor
WALTER PILKINGTON

INCORPORATED INSURANCE BROKERS

Garratt, Son & Flowerdew Ltd.



Head Office
7 Winckley Square, Preston
Preston 51841/6

Insurance Brokers
to Preston North End
Football Club

TOPICAL JOTTINGS

IT WAS pleasing this week to see Lancashire clubs at the top of all four Divisions. Liverpool, despite recent setbacks, are slightly ahead of Arsenal through winning at Everton; Burnley lead equally tenacious Q.P.R. and could reach 60 points; Bolton Wanderers have become Division Three favourites, and Southport lead Mansfield, Newport and Cambridge and ambitious newcomers Hereford by seven points.

This locality is gratified by the close proximity to these four of Oldham and Blackburn. The Rovers, now 19 League matches without defeat, made amends for dropping a home point by curbing their Notts County rivals with a 2-0 win.

Bolton after beating York 1-0 must have been amused by headlines about "breaking a hoodoo with their first-ever" win on this ground. What hoodoo? They had played there only once previously — last season — and taken a point for a goalless draw!

* * *

THERE is not much change at the top or bottom of any Division compared with four months ago. The first and last six in each Division then and now :—

DIVISION ONE		DIVISION TWO		DIVISION THREE		DIVISION FOUR	
Nov. 11th	March 7th	Nov. 11th	March 7th	Nov. 11th	March 7th	Nov. 11th	March 7th
Liverpool	Liverpool	Burnley	Burnley	Bolton W.	Bolton W.	Mansfield	Southport
Arsenal	Arsenal	Q.P.R.	Q.P.R.	B'mouth	Oldham	Southport	Mansfield
Leeds	Leeds	Aston Villa	Blackpool	Port Vale	B'mouth	Cambridge	Newport
Chelsea	Ipswich	Luton Town	Fulham	Walsall	Blackburn	Aldershot	Hereford
Tottenham	Newcastle	M'brough	Aston Villa	Oldham	Bristol	Newport	Cambridge
Newcastle	Wolves	Blackpool	Oxford	Grimsby	Notts C.	Reading	Exeter
Stoke	Birmingham	Sunderland	Carlisle	Chesterfield	Swansea	N'hampton	Peterboro'
W.B.A.	Stoke	Portsmouth	Huddersf'd	York	Chesterfield	Gillingham	Torquay
Leicester	C. Palace	Orient	Orient	Southend	Watford	Doncaster	N'hampton
Man. Utd.	Norwich	Brighton	Cardiff	Plymouth	Southend	Peterboro'	Crewe
Birmingham	Man. Utd.	Cardiff	Swindon	Scunthorpe	Halifax	Darlington	Colchester
C. Palace	W.B.A.	Millwall	Brighton	Swansea	Scunthorpe	Colchester	Darlington

VAUXHALL, BEDFORD AND AUDI NSU MAIN DEALERS

FAIRWAYS

PRESTON'S MOST PROGRESSIVE MOTOR DEALERS FOR NEW AND USED CARS

SALES, SERVICE, PARTS, ACCESSORIES AND CAR HIRE

BLACKPOOL ROAD — RIBBLETON — PRESTON

Telephone 57442-58286

Showrooms open weekdays 9 a.m. - 7 p.m. Saturday and Sunday 10 a.m. - 5 p.m.

THE SECOND DIVISION SCENE

BUOYANT Burnley and rampant Rangers, romping away with the promotion stakes, can afford confident though not complacent smiles as eight of the 19 teams separating them from hapless Brighton, still anchored at the bottom, strive for a place in the sun, while the lower 11 struggle to avoid being caught in a relegation tangle.

Their situation for seven of them worsened through their getting only six points between them from nine matches played since last week-end: Sunderland 1-0; Cardiff City 3-1; Huddersfield Town 1-1 and 2-2. Five defeats were added to their unimpressive records.

* * *

Relegated Town raised their supporters' hopes by holding Q.P.R. to 2-2 after being two goals down, proving they have not lost the spirit needed to fight back, but Cardiff's rally was negated when only 5,303 spectators saw them lose 0-1 at Blackpool on Wednesday night. Cardiff are in trouble, but all is far from lost.

Only Sunderland of the six clubs just above them can afford to breathe freely. They are reviving and have games in hand. Positions (games played in brackets): Portsmouth (31) 28, P.N.E. (31) 28; Carlisle (29) 26; Sunderland (27) 27; Huddersfield (32) 26; Orient (31) 25; Cardiff (30) 25. A mere 11 points separate Fulham (third) from Cardiff (21st).

MOST	wins 16 Burnley Q.P.R.	draws 14 Huddersfield	defeats 19 Brighton	goals for 61 Q.P.R.	against 70 Brighton
LEAST	wins 3 Brighton	draws 5 Cardiff	defeats 2 Burnley	goals for 29 Huddersfield	against 29 Burnley

Why not join—

PRESTON NORTH END SUPPORTERS' CLUB

"THE BEST IN THE NORTH WEST"

OPEN SEVEN DAYS PER WEEK

Enjoy top class entertainment and the excellent facilities of our Luxury Club

- | | |
|--|---|
| <ul style="list-style-type: none"> ★ Dancing ★ Resident organist, drummer & compere ★ Bingo (Sunday, Wednesday & Friday evenings & Sunday lunch-time - 3 big jackpots played for at each session) | <ul style="list-style-type: none"> ★ First class cabaret shows ★ Excellent catering facilities every evening and on match days ★ Colour T.V. in Cocktail lounge for sporting coverage only ★ Big match film shows ★ Entertainment to suit all tastes |
|--|---|

Membership is now open so hurry along and join—Unbeatable value at **75p** per year

A. BOAST & CO. LIMITED

REMOVAL & SHIPPING CONTRACTORS

Heated Storage

Regular Service to London, Midlands and the South, Part loads and single items accepted

First Drive-Thru Car Wash in Preston District—20p Fully Automatic

Empire Garage, Derby Street & Pole Street, Preston

Telephone : Preston 54647/8

SWINDON'S LEAGUE RECORD

SWINDON TOWN, the pride of Wiltshire throughout this century, have completed 45 seasons in The Football League from their election in 1920. Following is their record —

Season	Division	P.	W.	D.	L.	Goals		Points	Pos'n.	*Re-elected.
						F.	A.			
1920-21	3	42	21	10	11	73	49	52	4	
1921-22	3S	42	16	13	13	72	60	45	6	
1922-23	3S	42	17	11	14	62	56	45	9	
1923-24	3S	42	17	13	12	58	44	47	6	
1924-25	3S	42	20	11	11	66	38	51	4	
1925-26	3S	42	20	6	16	69	64	46	6	
1926-27	3S	42	21	9	12	100	85	81	5	
1927-28	3S	42	19	9	14	90	69	47	6	
1928-29	3S	42	15	13	14	75	72	43	10	
1929-30	3S	42	13	12	17	73	83	38	14	
1930-31	3S	42	18	6	18	89	94	42	12	
1931-32	3S	42	14	6	22	70	84	34	17	
1932-33	3S	42	9	11	22	60	105	29	22*	
1933-34	3S	42	17	11	14	64	68	45	8	
1934-35	3S	42	13	12	17	67	78	38	16	
1935-36	3S	42	14	8	20	64	73	36	19	
1936-37	3S	42	14	11	17	75	73	39	13	
1937-38	3S	42	17	10	15	49	49	44	8	
1938-39	3S	42	18	8	16	72	77	44	9	
<hr/>										
1946-47	3S	42	19	11	12	84	73	49	4	
1947-48	3S	42	10	16	16	41	46	36	16	
1948-49	3S	42	18	15	9	64	56	61	4	
1949-50	3S	42	15	11	16	59	62	41	14	
1950-51	3S	42	18	4	24	55	67	40	17	
1951-52	3S	46	14	14	18	51	68	42	16	
1952-53	3S	46	14	12	20	64	69	40	18	
1953-54	3S	46	15	10	21	67	70	40	19	
1954-55	3S	46	11	15	20	46	64	37	21	
1955-56	3S	46	8	14	24	34	78	30	24*	
1956-57	3S	46	15	6	25	66	96	36	23*	
1957-58	3S	46	21	15	10	79	50	57	4	
1958-59	3	46	16	13	17	59	57	45	15	
1959-60	3	46	19	8	19	69	78	46	16	
1960-61	3	46	14	15	17	62	55	43	16	
1961-62	3	46	17	15	14	78	71	49	9	
1962-63	3	46	22	14	10	87	56	58	2	
1963-64	2	42	14	10	18	57	66	38	14	
1964-65	2	42	14	5	23	63	81	33	21	
1965-66	3	46	19	13	14	74	48	51	7	
1966-67	3	46	20	10	16	81	59	50	8	
1967-68	3	46	16	17	13	74	51	49	9	
1968-69	3	46	27	10	9	71	35	64	2	
1969-70	2	42	17	16	9	57	47	50	5	
1970-71	2	42	15	12	15	61	51	42	12	
1971-72	2	42	15	12	18	43	47	42	11	

HONOURS — Football League : Division Three runners-up 1962-63 and 1968-69. **F.A. Cup —** Semi-finalist 1910, 1912, when in the Southern League. **League Cup —** Winners 1968-69 (when also promoted to Division Three), beating Arsenal in the Final at Wembley. **Anglo-Italian Cup —** Winners 1970.

Attendance Record : 32,000 v. Arsenal, F.A. Cup (3) January 15th, 1972.

Individual Scoring Record — Harry Morris, 47 (of 100) Division Three (S), 1926-27.

Most Capped Player — Rod Thomas, 23 for Wales to 1972-73.

Cambridge Press (Clayton-le-Moors) Ltd.

**WELLFIELD WORKS,
WHALLEY ROAD, CLAYTON-LE-MOORS,
Near ACCRINGTON.**

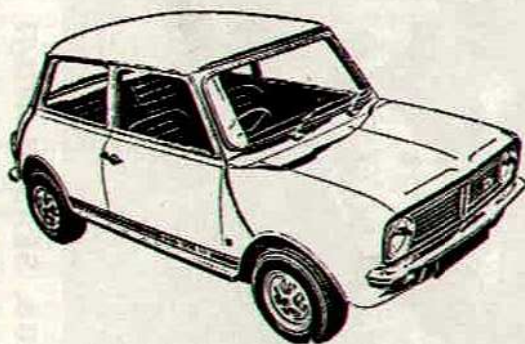
Telephone : Accrington 32054

Supplies of Fund Raising Tickets to Preston North End and the majority of Football League Clubs.

LOXHAMS

CAN

SUPPLY ALL YOUR MOTORING REQUIRMENTS



FROM

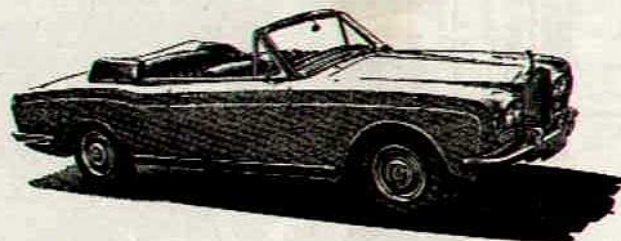
A

MINI

TO

A

ROLLS-ROYCE



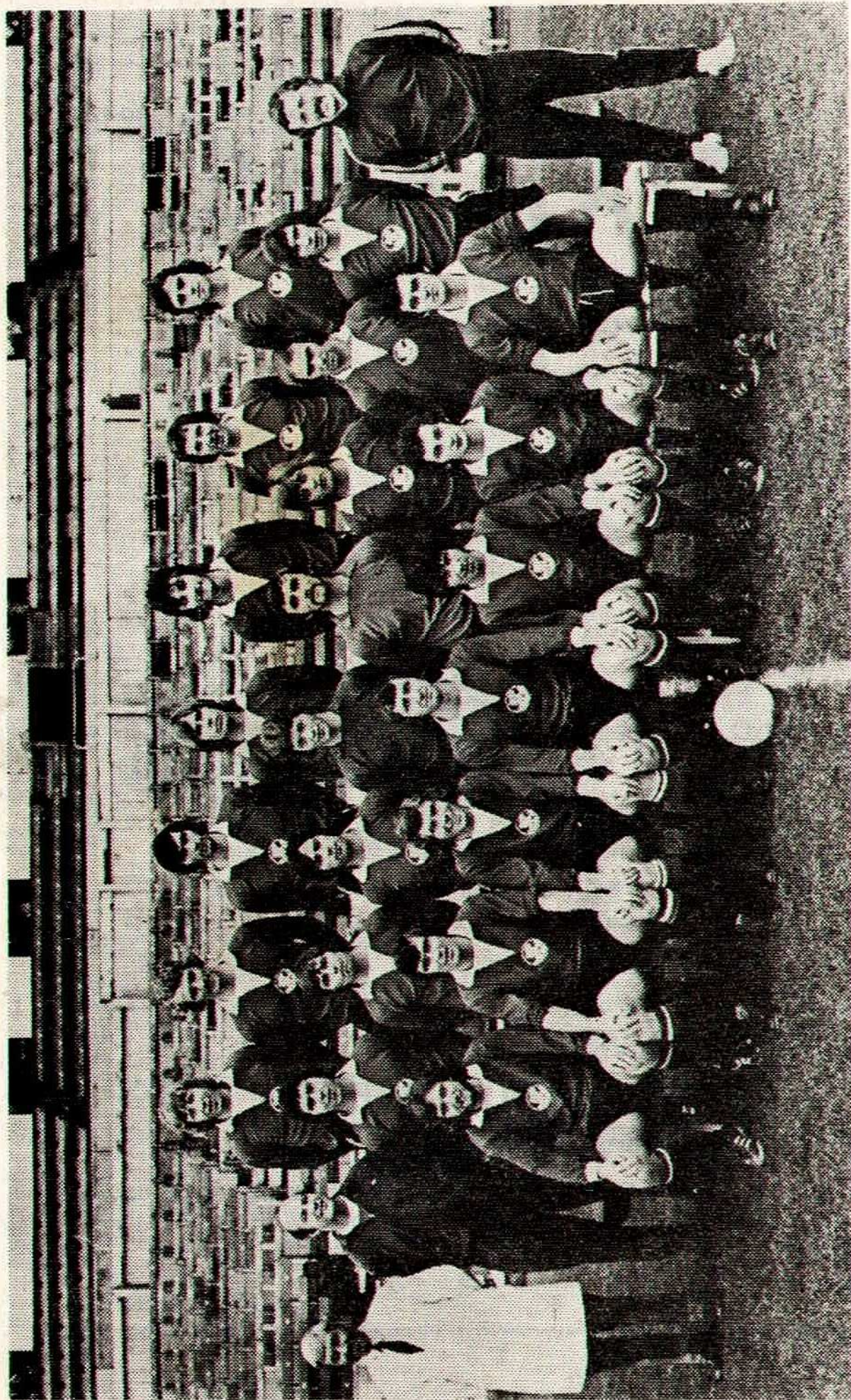
DISTRIBUTORS IN LANCASHIRE AND WESTMORLAND
FOR MORRIS - MG - WOLSELEY - TRIUMPH - ROVER
JAGUAR - DAIMLER - BENTLEY AND ROLLS ROYCE

**LOXHAMS GARAGES LTD.
CORPORATION STREET**

Phone PRESTON 54242

Also Loxhams depots at Accrington, Barrow, Blackpool, Blackburn, Chorley,
Kendal, Lancaster, St. Annes

A member of the Dutton Forshaw Group



SWINDON TOWN FOOTBALL CLUB, SEASON 1972-73

Back Row (left to right) : T. Tinson, N. J. Trollope, R. Potter, T. Hubbard, P. Syrett, D. Dangerfield, D. Moss.

Middle Row (left to right) : K. Morris (Physiotherapist), M. Owen (Second Team Trainer), K. Stroud, J. Butler, P. Peterson, J. Allan, P. Downsbrough, T. Jenkins, P. Noble, C. Porter.

Bottom Row (left to right) : R. Bunkell, R. Smart, R. Howell, R. Thomas, R. Treacy, S. Peplow, F. Burrows.

SWINDON TOWN

WELCOME to Swindon Town who returned to the Second Division in 1969 as runners-up to Watford, the Champions on goal average. Both got 64 points. This was Swindon's ninth season in Division Three, after 31 successive seasons in the old Southern Section. Swindon were one of 22 founder members of this Division in 1920.

In a highly encouraging start they finished fourth, fifth or sixth in seven of the first eight seasons. Altogether the club occupied fourth place five times, but in three off-colour years, 1933, 1956 and 1957 had to seek re-election.

Swindon's most memorable period began in 1907-08 when the Club entered the F.A. Cup and reached the third round. They vanquished redoubtable Sheffield United by 3-2 on the First Division club's ground, after a goalless draw at home, won a home tie with Queen's Park Rangers, then lost 0-2 at Wolverhampton to the 1908 Cup winners.

Two years later Swindon earned greater fame as giant killers by ousting Crystal Palace, Burnley, Tottenham Hotspur and Manchester City. These feats took the team to the semi-final. They were beaten 2-0 at Tottenham by Newcastle United, again the ultimate winners.

Inspired by England inside forward Harold Fleming, Swindon again reached the F.A. Cup semi-final 1912, but were beaten in a replay by battling Barnsley, the Cup winners. The following season, after getting through two Cup rounds, they were knocked out at Sunderland by the eventual League Champions and defeated Cup Finalists.

The Reverend W. Pitt certainly never dreamt such dizzy heights would be reached when in 1881, he founded the Swindon club as an amateur organisation. Professionalism was accepted in 1894, with a weekly bill of £10 for the whole side! It ensured founder-membership of the Southern League. Swindon were champions in 1911 and 1914.

PEN PICTURES

(Last season's League appearances and goals are shown in brackets, e.g. 30-7)

Peter DOWNSBOROUGH (*goalkeeper*). Signed August, 1965, from Halifax, who discovered him in local football. Fearless and agile. Born at Halifax (31-0).

Rod THOMAS (*right back*). Born Glyncorrwg, he rose from Under-23 level to Welsh international status. Signed from Gloucester City July, 1964. A giant of 6ft., 12st. 10lb. (36-1).

John TROLLOPE (*left back*). Native of Swindon who joined the club from school. From his League debut in 1960-61, aged only 16 had made 368 consecutive first team appearances to August, 1968, when he broke a leg. Played his 600th game eight days ago; 6ft. 0ins., 12st. 4lb. (42-1).

Kenneth STROUD (*right half*). Another big fellow, 5ft. 11ins., 12st. A Londoner and schoolboy international; began with Swindon as an apprentice, 1967 (2-0).

Frank BURROWS (*centre half*). A Scot born at Larkhall, started with Raith Rovers. Signed for Swindon after three seasons with Scunthorpe. 6ft. 1in.; 12st 8lb. (38-1).

Ron POTTER (*left half*). A six footer of 12st., completes a physically powerful defence. Signed from W.B.A. November, 1970. Belongs to Wolverhampton (2-0).

David MOSS (*outside right*). Youthful newcomer who was with his native Witney Town in the Hellenic League, 1969. (2-0).

Roger SMART (*inside right*). A Swindon-born hard worker who joined the club from Swindon Schoolboys'. Versatile (23-0).

Ray TREACY (*centre forward*). Experienced newcomer who was Charlton's leading scorer with 13 goals last season (38-13).

Peter NOBLE (*inside left*). Born Sunderland. Signed January, 1968, from Newcastle. Helped Swindon to gain promotion and win League Cup (39-14).

Mick McGOVERN (*outside left*). Swindon's latest recruit, 6ft. 0 ins., 12st.; was signed from Q.P.R. last month. Born Hayes, Middlesex (0-0).

PRESTON NORTH END RESULTS 1972-73

DIVISION TWO FIRST ELEVEN

P31, W10, D8, L13,—Goals 30-47,—Pts. 28—Pos. 15

1972		Rslt.	Pts.	Gate
Aug. 12	Aston Villa	h	0-1	0 17371
" 16	League Cup 1. Workington	a	0-1	- 4055
" 19	Luton Town	a	0-1	0 11507
" 26	Queen's Park Rangers	h	1-1	1 9242
" 29	Burnley	a	0-2	0 13166
Sept. 2	Fulham	a	3-1	2 7640
" 9	Hull City	h	1-0	2 8136
" 16	Portsmouth	a	1-0	2 6965
" 19	Middlesbrough	a	0-0	1 9679
" 23	Carlisle United	h	1-0	2 10957
" 25	Orient	h	0-0	1 10709
" 30	Oxford United	a	2-0	2 8850
Oct. 7	Sheffield Wednesday	h	1-1	1 15600
" 14	Swindon Town	a	2-3	0 8198
" 21	Millwall	h	1-0	2 10010
" 28	Cardiff City	a	0-3	0 12208
Nov. 3	Orient	a	2-1	2 5661
" 11	Middlesbrough	h	0-1	0 10015
" 18	Nottingham Forest	a	1-0	2 10383
" 25	Brighton & Hove Albion	h	4-0	2 8005
Dec. 2	Huddersfield Town	a	0-0	1 6900
" 9	Blackpool	h	0-3	0 18822
" 16	Sunderland	a	0-0	1 11529
" 23	Bristol City	h	3-3	1 7500
" 26	Carlisle United	a	1-6	0 9939
" 30	Luton Town	h	2-0	2 9638
1973				
Jan. 6	Queen's Park Rangers	a	0-3	0 10519
" 13	F.A. Cup 3 Grimsby Town	a	0-0	- 16000
" 15	replay Grimsby Town	h	0-1	- 13175
" 20	Fulham	h	0-3	0 5759
" 27	Hull City	a	2-6	0 9120
Feb. 10	Portsmouth	h	0-5	0 6230
" 17	Aston Villa	a	1-1	1 27717
Mar. 3	Sheffield Wednesday	a	1-2	0 13427
" 10	Swindon Town	h		
" 17	Millwall	a		
" 24	Cardiff City	h		
" 31	Brighton & Hove A.	a		
April 7	Huddersfield Town	h		
" 14	Blackpool	a		
" 21	Nottingham Forest	h		
" 23	Bristol City	a		
" 24	Oxford United	h		
" 28	Burnley	h		
May 5	F.A. Cup Final			
	—Sunderland (postponed)	h		

FRIENDLIES

July 29	Bolton Wanderers	a	0-1	- 4023
Aug. 2	Dundee	a	1-2	- 6200
" 5	Coventry City	h	0-1	- 4929
" 7	Oldham Athletic	a	2-1	- 2729
Sept. 6	Kilmarnock	h	0-0	- 2300
Feb 25	Birmingham	h	0-1	- 1782
Mar 5	Horsens (Denmark)	h	2-0	- 1225

CENTRAL LEAGUE — SECOND ELEVEN

P29, W4, D9, L16,—Goals 30-57, Pts. 17-Pos. 20

1972		Rslt.	Pts.
Aug. 12	Aston Villa	a	1-4 0
" 14	Derby County	a	3-6 0
" 19	Blackburn Rovers	h	2-0 2
" 23	West Bromwich Albion	a	0-1 0
" 26	Everton	a	1-0 2
" 28	Burnley	h	0-4 0
Sept. 2	Derby County	h	1-4 0
" 9	Coventry City	a	2-4 0
" 11	Leeds United	a	1-2 0
" 16	Manchester City	h	1-1 1
" 26	Bury	a	0-1 0
" 30	Sheffield United	h	0-0 1
Oct. 7	Stoke City	a	0-3 0
" 14	Sheffield Wednesday	h	0-1 0
" 21	Bolton Wanderers	a	2-0 2
" 28	Manchester United	h	1-1 1
Nov. 4	West Bromwich A.	h	3-4 0
" 18	Liverpool	h	1-5 0
" 25	Nottingham Forest	a	0-2 0
Dec. 9	Blackpool	a	0-0 1
" 16	Leeds United	h	1-1 1
" 23	Wolverhampton W.	a	1-2 0
" 30	Blackburn Rovers	a	1-1 1
1973			
Jan. 13	Aston Villa	h	1-2 0
" 22	Everton	h	0-0 1
Feb. 3	Newcastle United	h	2-2 1
" 5	Coventry City	h	2-2 1
" 24	Sheffield United	a	0-3 0
Mar. 3	Stoke City	h	3-1 2
" 10	Sheffield Wednesday	a	
" 12	Huddersfield (postponed)	h	
" 17	Bolton Wanderers	h	
" 24	Manchester United	a	
" 31	Nottingham Forest	h	
April 7	Huddersfield Town	a	
" 11	Newcastle United	a	
" 14	Blackpool	h	
" 21	Liverpool	a	
" 23	Wolverhampton W.	h	
" 28	Burnley	h	
	—Bury (postponed)	h	
	—Manchester City (")	a	

Appearances (29 matches)

Baxter S. 28	Brindle 14	Billington 4
Morley 27	Connor 12	Taylor 4
Kershaw 22	Bruce 10	Brady 3
Williams 20	Richmond 10	McMahon 3
Sheehy 20	Lamb 9	Young 2
Holden 20	Clark 8	Wilson 1
Snookes 20	McIlmoyle 5	Spark 1
Brown 18	Sumner 5	Tarbuck 1
McLachlan 16	Blyth 5	Dewsnip 1
Ross 14	Spavin 5	Bird 1
	Baxter M. 5	McNab 1

Goals (30)

Holden 9	Young 2	Williams 1
Sheehy 7	McIlmoyle 2	Kershaw 1
Bruce 4	McLachlan 1	Clark 1
	Snookes 1	opponent 1

The Preston North End F.C. hope you find this programme both informative and interesting, and we wish to acknowledge the co-operation of the *Lancashire Evening Post* for allowing us to publish photographs taken by their Staff Photographers.

APPEARANCES AND SCORERS 1972-73

Football League Division II — P31, W10, D8, L13, Goals 30—47—Pts. 28 Position 15

F.A. Lge. Cup Cup			G	RB	LB	RH	CH	LH	OR	IR	CF	IL	OL	Total
			(1)	(2)	(3)	(4)	(5)	(6)	(7)	(8)	(9)	(10)	(11)	
2	1	Alan KELLY.....	26	—	—	—	—	—	—	—	—	—	—	26
—	—	John BROWN.....	5	—	—	—	—	—	—	—	—	—	—	5
—	1	John McMAHON	—	27	1	—	—	—	—	—	—	—	—	28
2	—	George ROSS.....	—	2	—	1	—	—	—	—	—	—	—	3
2	1	Jim McNAB	—	—	25	2	—	—	—	—	—	—	—	27
2	1	John BIRD	—	—	1	26	3	—	—	—	—	—	—	30
2	1	Graham HAWKINS ..	—	2	—	—	26	—	—	—	—	—	—	28
1	—	David CONNOR	—	—	3	—	—	5	—	—	—	2	—	10
1	—	Alan SPAVIN.....	—	—	—	—	—	23	—	—	—	1	—	24
2	—	Alec SPARK	—	—	1	2	2	2	—	20	—	1	—	28
—	1	Neil YOUNG	—	—	—	—	—	—	1	3	—	18	1	23
—	1	Alan LAMB	—	—	—	—	—	1	—	2	—	—	—	3
2	—	David WILSON	—	—	—	—	—	—	22	3	—	—	1	26
2	1	Hugh McILMOYLE....	—	—	—	—	—	—	—	—	14	—	—	14
—	—	Mel HOLDEN	—	—	—	—	—	—	—	—	1	—	—	1
2	1	Alan TARBUCK.....	—	—	—	—	—	—	3	—	14	6	—	23
—	—	*Roger DAVIES	—	—	—	—	—	—	—	—	2	—	—	2
—	—	Gary WILLIAMS	—	—	—	—	—	—	—	—	—	1	—	1
—	1	Ricky HEPPOLETTE (transferred)	—	—	—	—	—	—	3	1	—	—	13	17
—	1	Clive CLARK	—	—	—	—	—	—	1	—	—	1	3	5
2	—	Alec BRUCE	—	—	—	—	—	—	1	2	—	1	13	17
Total			31	31	31	31	31	31	31	31	31	31	31	341

*Returned to Derby County after brief period on loan.

League Division II scorers: Bruce 8 (1 as sub.) Young 6 (2 pen.), Tarbuck 6, Wilson 5, McNab 2, Spavin 1, McMahon 1, Spark 1 — Total 30

DIVISION TWO 1972-73

Positions to March 3rd, 1973, inclusive

	P.	W.	D.	L.	Goals		
					F.	A.	Pts.
Burnley	31	16	13	2	52	29	45
Queen's Park Rangers	32	16	12	4	61	35	44
Fulham	31	13	10	8	49	36	36
Blackpool	33	13	10	10	45	39	36
Aston Villa	31	13	10	8	38	36	36
Oxford United	32	15	5	12	40	32	35
Sheffield Wednesday	32	13	8	11	49	42	34
Luton Town.....	31	12	10	9	39	36	34
Middlesbrough	33	12	10	11	31	36	34
Millwall	32	13	7	12	44	36	33
Bristol City	31	11	10	10	42	40	32
Hull City	30	10	10	10	45	39	30
Nottingham Forest....	31	10	10	11	34	38	30
Portsmouth	31	10	8	13	36	39	28
Preston North End ..	31	10	8	13	30	47	28
Carlisle United	29	9	8	12	42	37	26
Sunderland	27	9	9	9	38	34	27
Huddersfield Town ..	32	6	14	12	29	41	26
Orient	31	7	11	13	32	39	25
Swindon Town	32	7	11	14	38	53	25
Cardiff City	30	10	5	15	34	45	25
Brighton & Hove Alb. n.	31	3	9	19	31	70	15

CENTRAL LEAGUE 1972-73

Positions to March 3rd, 1973 inclusive

	P.	W.	D.	L.	Goals		
					F.	A.	Pts.
Coventry City	32	17	8	7	58	36	42
Derby County	31	18	5	8	60	40	41
Liverpool	29	16	8	5	65	36	40
Aston Villa	33	16	7	10	47	43	39
Sheffield Wednesday	32	15	8	9	60	37	38
Wolverhampton W. ..	31	16	6	9	47	33	38
West Bromwich Albion	31	15	8	8	51	38	38
Stoke City.....	32	16	6	10	66	50	38
Everton	30	15	7	8	41	26	37
Blackpool	29	13	5	11	40	35	31
Nottingham Forest	29	11	9	9	42	39	31
Sheffield United	29	12	6	11	41	33	30
Manchester City	30	9	11	10	45	53	29
Newcastle United	27	12	3	12	48	38	27
Manchester United ..	28	10	7	11	32	34	27
Leeds United	31	11	5	15	35	43	27
Huddersfield Town ..	31	8	7	16	41	64	23
Bury	30	9	4	17	39	67	22
Burnley	30	6	7	17	36	50	19
Preston North End ..	29	4	9	16	30	57	17
Bolton Wanderers....	30	4	8	18	30	69	16
Blackburn Rovers	30	5	4	21	29	62	14

Willie Cunningham (Sports) Ltd

SCOUT, GUIDE, BROWNIE AND CUB WEAR

'Best in the field' Bukta Sportswear used by all leading clubs

Also Agents for Slazengers and Dunlop Sports Goods

Price List on request

Official Suppliers to Preston North End F.C.

47 CHURCH STREET, PRESTON

(opposite Grimshaw Street)

Telephone 57322

The good taste is here!

Lion Ales

BY MATTHEW BROWN

The Striker that always Scores

when you get

LUMBAGO, NEURITIS, SCIATICA,
FIBROSITIS, NEURALGIA, STIFF
JOINTS, MUSCULAR ACHES AND
PAINS

Make sure you see the match next week by using
Fieryjack Ointment available from chemists every-
where at **22p** a tin.

fieryjack

PROUD
PRESTON
PROMOTIONS

SUPPORT NORTH END

Become a

VERY **I**MPORTANT **P**ERSON
FOR
PNE

- * 10% COMMISSION ON ALL SALES
- * 10% BONUS ON ALL WINNING TICKETS OVER £2
- * REBATE ON SEASON TICKETS
- * FREE ADMISSION TO A NUMBER OF MATCHES AT DEEPPDALE
- * FREE MEMBERSHIP TO SUPPORTERS' SOCIAL CLUB
- * PONTINENTAL HOLIDAYS

FILL IN THIS FORM NOW

I WANT TO BE AN AGENT
(I am over 16 years of age)

NAME

ADDRESS

NUMBER OF TICKETS REQUIRED (Sale or Return basis).....

For Details: Organiser, Pools Office, Deepdale Road, Preston, Lancs. Tel. Preston 56500
,, 50894

NORTH END'S POSTWAR STORY (34)

WALTER PILKINGTON LOOKS BACK OVER THE PAST 25 YEARS

1947-48 THAT epic 3-3 draw with Liverpool immediately preceded a Christmas renewal of hostilities with Burnley, traditional rivals whose performances had fully justified their promotion. They scored the only goal in a drab game at Turf Moor with the last kick. Willie McIntosh pulled a muscle. Tom Finney was kept out by an ankle injury. Billy Scott was recalled at left back to replace Robertson. McClure, a newcomer from Albion Rovers made his debut, was promptly dropped and did not re-appear until March.

The return match on Boxing Day with 39,400 present—they tell us to forget the past but how can you with such memories?—was a scorcher which culminated in Burnley's first away defeat by 3-2. Tom Finney could never forget this thrilling ebb-and-flow nail-bitter, nor could all who were held fast by its drama.

He was not really fit to play but consented to risk it after a pain-killing injection. His performance was heroic. The miserable after-effects he suffered without lashing into print about being a martyr or badly done to were typical of the man.

His presence inspired North End and contributed to a debut that Harry Jackson, centre forward signed on a free transfer from Manchester City on Christmas Eve, had every reason to remember. A goal rewarded his enthusiasm and Andy McLaren got the other two.

The New Year ushered in a comperative slump — 1-1 at Middlesbrough, with Finney the P.N.E. scorer, 2-1 at home against Charlton and two more for Tom which kept his team third from the top; a second half 0-3 flop in 15 minutes at Highbury before 62,000, and, thanks to spectacular goalkeeping by Jimmy Gooch; a 1-1 draw at Old Trafford against the Cup favourites after McLaren had scored the first goal. Jimmy Delaney equalised three minutes from full time to the delight of a 50,000 crowd.

These really were great days for "Proud Preston" who, in the meantime, had captured some headlines by getting through three rounds of the F.A. Cup by winning three games away from home. Gallant Gooch was the hero on Millwall's blitzed ground. The "Lions" scored first but were tamed by goals from McLaren and Harry Anders.

Shankly captained the side at Portsmouth in heavy rain. Half-time 1-1, then the inspiration of moving Finney to centre forward. He scored. North End won 3-1. In the fifth round at Maine Road with 67,494 onlookers, Em Williams excelled, Shankly was grim and great, Bobby Beattie brilliant, and McIntosh scored the only goal.

SWINDON TOWN QUIZ

- 1—WHAT long distance association has Swindon Town Football Club with the Church?
- 2—WHY were football followers well aware of Swindon long before the club came into The Football League?
- 3—WHEN did North End first play on Swindon's ground?
- 4—WHO was the devoted club man whose name is permanently linked with Swindon football?
- 5—WHAT noted Manchester City player was brought into prominence by Swindon and what are his Preston connections?
- 6—WHAT is Swindon's nickname?
- 7—JOHN TROLLOPE'S partner in his first ever-present season shared with him a remarkable distinction. What was it?

Answers on page 15.

YOUNGSTERS PLEASE NOTE — KEEP OFF THE GRASS

THE playing area MUST be kept clear of spectators. Needless damage is done, particularly during wet weather, when supporters invade the pitch.

THIS MUST CEASE, otherwise restrictions could be imposed which would penalise well-behaved youngsters as well as offenders. By all means be enthusiastic, BUT STAY ON THE TERRACES.

TODAY'S PERSONALITIES

MAN AT THE HELM

LES ALLEN

(SWINDON TOWN MANAGER)

LES ALLEN, appointed Dave Mackay's successor at Swindon last November, returned to the English League scene a few months earlier when the club appointed him chief scout. Since leaving Queen's Park Rangers where he enjoyed meteoric prominence he had been with a non-League club and with one in Greece.

He was out of work when he got his first football job in 1954. As an out-of-work youth he was sent by a civil servant for a trial with West Ham. Unsuccessful he drifted away. Eventually it was Chelsea who signed him.

He made his League debut in 1956/57 but he never became a regular first-teamer at Stamford Bridge. Thus he jumped at the chance to move to Tottenham in exchange for Johnny Brooks in December, 1959, and never looked back.

One of the famous 'Spurs side which won the Cup and League double the following season he was ever-present in both competitions. His outstanding displays earned him an England Under-23 cap against Wales. Two years later he played for the Football League XI against the Italian League.

Queen's Park Rangers had a brainwave when they signed him in 1965, for he finished the season as the Third Division's top scorer with 30 League goals. He also did much to inspire the Ranger's team which stormed to promotion to the Second Division in 1966/67 and to the First Division in 1968. He made his second successful Wembley appearance when Rangers beat West Bromwich in the 1967 League Cup final.

Fortune turned against him when he accepted a managerial post at The Bush in the hope of leading the club back to the First Division.

***Referee* — CLIFF HOWELL (North Shields)**

IN CHARGE today, Mr. Howell is in his fourth season as a full Football League referee. A company director of North Shields, he started refereeing in Cheshire in 1954. He became a League linesman in 1960 and refereed the Northumberland County Cup Final last season.

He is interested in swimming, tennis and home wine-making. Cliff Howell's wife and 14-year-old son travel to watch most of the games in which he officiates, and they duly let him have their assessment.

SWINDON TOWN QUIZ ANSWERS

- 1—IT WAS founded as a means of providing recreation by a clergyman, the Reverend W. Pitt.
- 2—BECAUSE of their remarkable exploits in The F.A. Cup, described on page 9.
- 3—During North End's 1934-35 Cup run. We won a fourth round tie there by 2-0.
- 4—Long-serving secretary and manager, Sam Allen.
- 5—MIKE SUMMERBEE. He was born at Preston, and his father was a North End player in the 1930's.
- 6—THE "Moonrakers" or "Robins".
- 7—BOTH were 16 years old and the youngest pair of backs to play for one club in League football.

Top of the League
for
print print print print

★ ★ ★

Industrial catalogues
Bus timetables
Colour printing
Travel brochures

★ ★ ★

Mather Bros (Printers) Ltd
One Garstang Road
Preston PR1 1JA

Phone 58391

Telex 67674

North Enders in action



A fine action picture of Neil Young

Your half-time check

- A — BRIGHTON & HOVE ALBION v. HUDDERSFIELD TOWN
- B — BURNLEY v. SHEFFIELD WEDNESDAY
- C — FULHAM v. CARLISLE UNITED
- D — LUTON TOWN v. SUNDERLAND
- E — MIDDLESBROUGH v. CARDIFF CITY
- F — NOTTINGHAM FOREST v. BRISTOL CITY
- G — ORIENT v. MILLWALL
- H — OXFORD UNITED v. BLACKPOOL
- J — PORTSMOUTH v. HULL CITY
- K — QUEEN'S PARK RANGERS v. ASTON VILLA
- L — BIRMINGHAM CITY v. MANCHESTER UNITED
- M — IPSWICH TOWN v. ARSENAL
- N — LEEDS UNITED v. EVERTON
- O — LEICESTER CITY v. DERBY COUNTY
- P — LIVERPOOL v. SOUTHAMPTON
- Q — MANCHESTER CITY v. COVENTRY CITY

PRESTON NORTH END FOOTBALL FLYER TO BRIGHTON SATURDAY, 31st MARCH, 1973

50 SEATS ONLY

Coach departs North End Ground (a.m.)	1015	<i>Stand seat tickets will be issued on coach</i>	
Arrives Blackpool Airport	1100	Depart Football Ground	1700
Depart Blackpool Airport	1130	Arrive Gatwick Airport	1750
Arrive Gatwick Airport	1245	Depart by air; Gatwick Airport	1815
<i>Packed lunches will be distributed during flight. Coffee and biscuits also served</i>		Arrive Blackpool Airport.....	1930
Depart Gatwick Airport	1300	Coach departs Blackpool Airport.....	1945
Arrive Brighton & Hove Albion Football Ground.....	1350	Arrive North End Ground (8.30 p.m.)	2030

any Club Member interested should contact Pools Office . Phone: 56500 or 50894

Cost inclusive of seat at match and Insurance — £12.50 per person

The attention of all Supporters, particularly Juveniles, is drawn to the importance of KEEPING BEHIND THE PERIMETER WALL AT ALL TIMES, to avoid any form of damage to the newly-erected advertising signs.

TRAVEL by RIBBLE

TO NORTH END HOME AND AWAY GAMES

Regular services to Deepdale for First Team home games from many surrounding areas

EXCURSIONS TO PRINCIPAL AWAY MATCHES

Coaches available for Private Parties — Quotations without obligation from

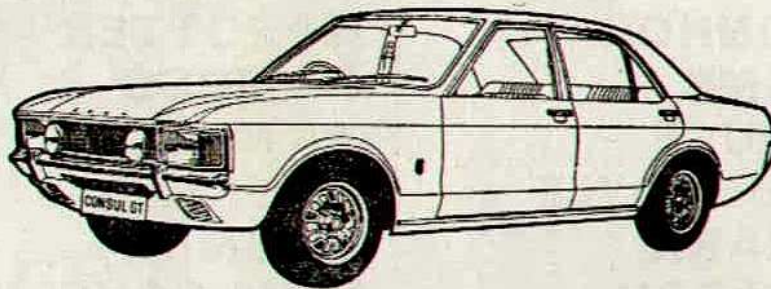
RIBBLE TRAVEL OFFICE, TRAVEL CORNER

70/72 LANCASTER ROAD, PRESTON 'Phone 58226

BRADSHAW'S MOTOR HOUSE LIMITED

Main  Dealers

MARSH LANE, PRESTON Ring Preston 54083



FULL RANGE OF FORD PASSENGER VEHICLES



FORD TRUCK SPECIALISTS



**WIDE RANGE OF QUALITY A1 GUARANTEED
USED VEHICLES**

Largest Stockist of FORD PARTS in the area
Modern Workshops with facilities for major repairs and spraying

FOR SALES . . SERVICE . . PARTS

You must visit **BRADSHAW'S**

Ring Preston 54083 for your demonstration drive

LEAGUE DIVISION II at DEEPDALE — 10th MARCH, 1973

Preston North End

WHITE SHIRTS

- 1 BROWN**
- 2 HAWKINS**
- 3 BIRD**
- 4 McNAB**
- 5 SPARK**
- 6 CONNOR**
- 7 LAMB**
- 8 BRUCE**
- 9 McILMOYLE**
- 10 CLARK**
- 11 WILSON**

Substitute—To be announced

Swindon Town

RED SHIRTS

- 1 DOWNSBOROUGH**
- 2 THOMAS**
- 3 TROLLOPE**
- 4 BUTLER**
- 5 BURROWS**
- 6 POTTER**
- 7 MOSS**
- 8 NOBLE**
- 9 TREACY**
- 10 SMART**
- 11 McGOVERN**

Substitute—To be announced

**Today's match ball kindly donated by:
Mr. H. Flintoff, The Rose & Crown Hotel, Much Hoole, nr. Preston**

Referee:

**MR. C. HOWELL
(North Shields)**



Linesmen:

**Red Flag:
Mr. G. Boothman**

**Yellow Flag:
Mr. R. Jones**

NEXT HOME GAMES

Monday, 12th March, 1973.

Kick-off 7-30 p.m.

Preston North End Reserves v. Huddersfield Town Reserves

Saturday, 17th March, 1973

Kick-off 3-0 p.m.

Preston North End Reserves v. Bolton Wanderers Reserves